

Simatic IT Unicam What's new in eMES 11

New capabilities improve productivity and efficiency

Benefits

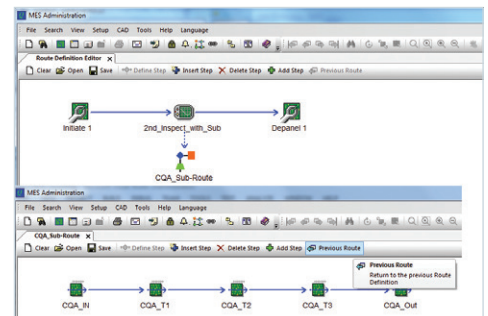
- More easily manage complex repair processes with routing enhancements
- Full traceability for process violations
- Easily assign check lists for lots at each route step
- Immediately communicate critical information with factory alerts
- Provide rich work instructions with multiple alert documents
- Generate component-level traceability reports easier and faster
- Quickly and easily find and view electronic documents and work instructions
- Out-of-the-box integration to Cogiscan TTC solutions for shop floor material and logistics

Summary

Unicam eMES for electronics manufacturing is a comprehensive manufacturing execution system (MES) that enables printed circuit board (PCB) and box assemblers to meet traceability requirements, control production and integrate their shop floor into their enterprise resource planning (ERP) system and extended enterprise. Unicam eMES addresses all your needs on a scalable and modular platform for electronics production.

Routing enhancements

The introduction of sub-routes now provides the ability to manage complex repair processes as well as alternate processes for all or only a percentage of units in a lot. A sub-route can be associated to a route check operation and assigned a sampling percentage and the system will automatically send the appropriate units to the alternate route.



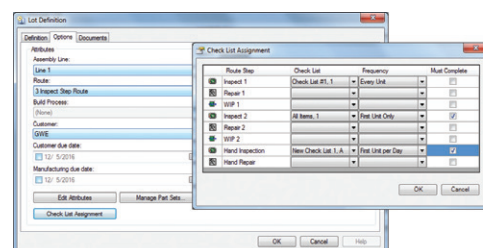
Unit out-of-process capture

The system will now capture every instance of an invalid attempt to process a unit outside of the valid procedure. This data is automatically included in the serial number traveling report.

Serial Number	Process	Status	Reason	Work/Connect	Yield	Start	End	Time	Reference	Operator
...

Check list enhancements

The existing check list functionality has been enhanced to support assignment of check lists for lots at each route step in the route definition. In addition, the check lists can be configured to be captured for each unit of the lot, for only the first unit scanned at the route step (first article), or for the first unit scanned at the route step each day.



Simatic IT Unicam

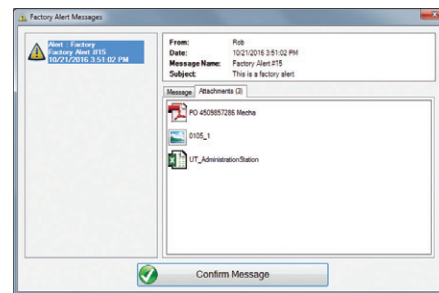
What's new in eMES 11

Features

- Routing enhancements
- Unit out-of-process capture
- Check list enhancements
- Factory alerts
- Component traceability enhancements
- Web production documentation viewer
- Cogiscan integration for material logistics

Factory alerts

The introduction of real-time factory alerts provides an efficient method for the administrator to immediately communicate critical information to all operators, or to target specific operators based on the product or lot they are working on, or on their location in the factory. Each alert can also be configured with multiple documents, allowing for rich work instructions to be provided to the operators.



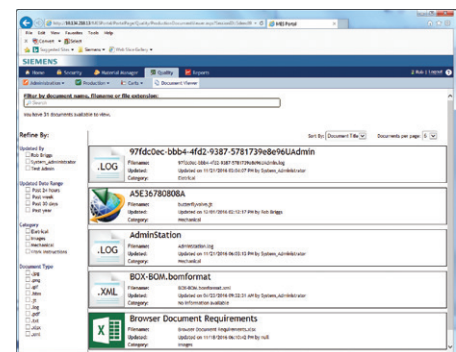
Component traceability enhancements

The capture of the component-level traceability data has been optimized to increase performance of report generation, and to allow for an easy view into what is currently loaded on the machines in the factory.

Real Barcode	Lot	Quantity	Load Time	Part Number	Date Code	Vendor Name	Vendor Part Number
REEL_X1027_1	10	840	12/1/2016 7.5.	X1020007.00	X1027_D01	Mitsubishi	VEN_X102000
RF_R_03-101751_002	6	5000	11/28/2016 1.	03-101751	03-03-101751	Fujitsu	VEN_03-101751

Web viewer for production documents

A new page is available in the MES portal that provides electronic document/work instructions viewing, either for a specific product or for all documents in the system. It provides a "smart search" capability for finding documents, as well as several filtering capabilities to quickly find the relevant document.



Cogiscan integration for material logistics

Seamless integration of Cogiscan® track, trace and control (TTC) solutions for the electronics manufacturing industry enables out-of-the-box shop floor connections for material and logistic data in electronic production.

Siemens PLM Software
www.siemens.com/plm

Americas +1 314 264 8499
 Europe +44 (0) 1276 413200
 Asia-Pacific +852 2230 3308

For more information, contact

Acuity Electronics, Inc.
 PO Box 1015
 Belmont, CA 94002

Toll-Free: 855-642-2848
 Email: info@acuityelectronics.com

www.acuityelectronics.com

© 2016 Siemens Product Lifecycle Management Software Inc. Siemens and the Siemens logo are registered trademarks of Siemens AG. D-Cubed, Femap, Fibersim, Geolus, GO PLM, I-deas, JT, NX, Parasolid, Simatic IT, Solid Edge, Syncrofit, Teamcenter, Tecnomatix and Unicam are trademarks or registered trademarks of Siemens Product Lifecycle Management Software Inc. or its subsidiaries in the United States and in other countries. All other logos, trademarks, registered trademarks or service marks belong to their respective holders.
 61375-A4 12/16 H